



# OpenRoads Survey: Reports

## Generating CSV Reports for Selected Points

Two custom report formats are available in the OHDOT Standards for point reports. Each is documented below.

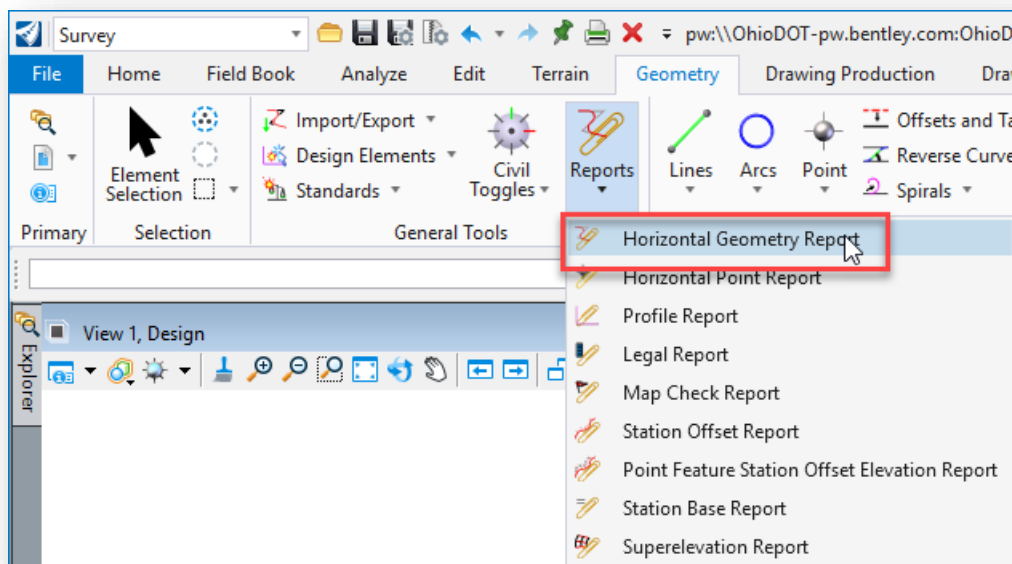
### Point Reports

The OHDOT Standards provide various customized reports for generating a CSV file with the point properties such as point number, northing, easting, elevation, etc.

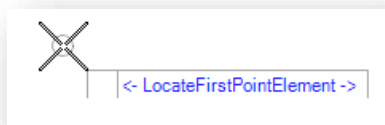
### Horizontal Point Report

The **Horizontal Point Report** is used to generate a report in ASCII format for selected points. Take the following steps to generate the report:

- Select **Survey > Geometry > Reports > Horizontal Point Report** as shown below



- When prompted, select each point that is to be included in the report. Right-click when you have completed your selection



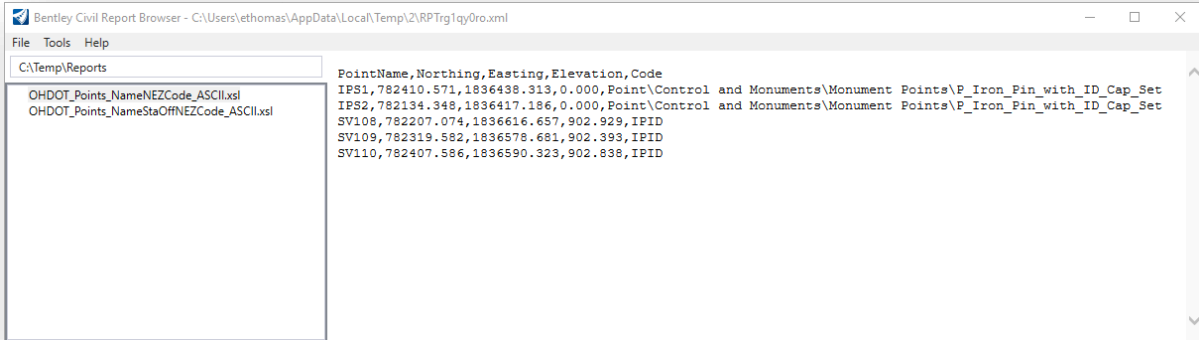
The default report is opened. Take the following steps to access the ODOT report:

- From the *Civil Report Browser* dialog, select **Tools > Style Sheet Root**



Note: In this release of the software, you cannot browse to a folder within ProjectWise. The workaround is to copy the **\Standards\Reports** folder and its content to a local folder. In the example below, the folder was copied to **C:\Temp\**

- Select the **OHDOT\_Points\_NameNEZCode\_ASCII.xml** report as shown below.

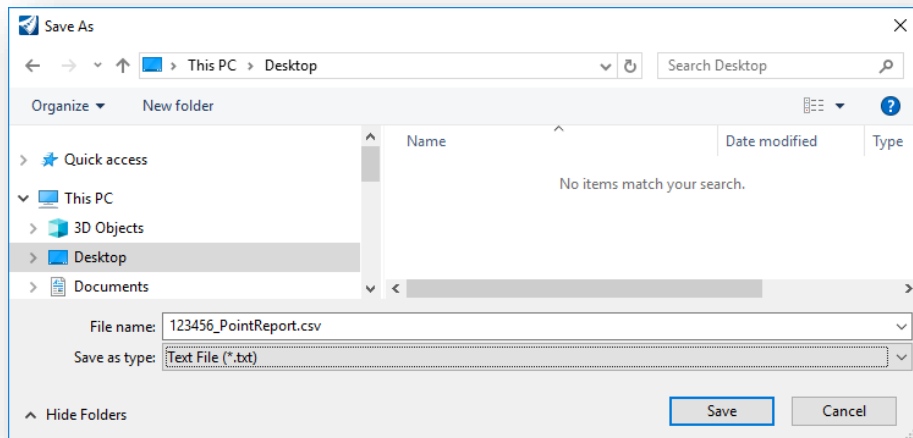


In the example above, two Geometry Points and three Survey Points were selected.

The Code for Geometry Points will include the full path for the feature name as shown above.

The report can be saved as a CSV file as follows:

- From the **Report Browser** dialog, select **File > Save As**
  - Enter a name for the file
  - Select the **Text File (\*.txt)** option for the **Save as type** parameter
  - Browse to the location where the file will be saved.  
Note: In this release of the software you cannot browse to a ProjectWise folder location.
  - Select the **Save** icon

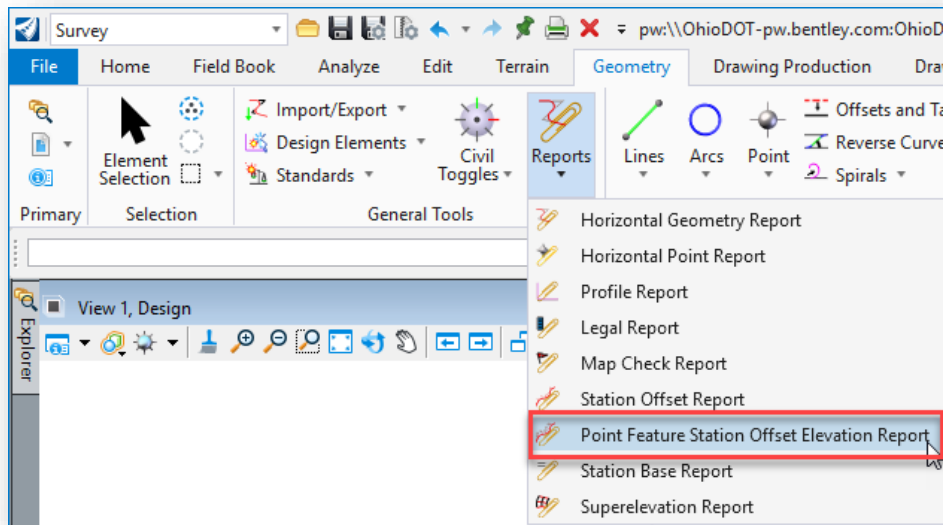




### Point Feature Station Offset Elevation Report

The **Point Feature Station Offset Elevation Report** is used to generate a report in ASCII format for a selected alignment and points. Take the following steps to generate the report:

- Select **Survey > Geometry > Reports > Point Feature Station Offset Elevation Report** as shown below



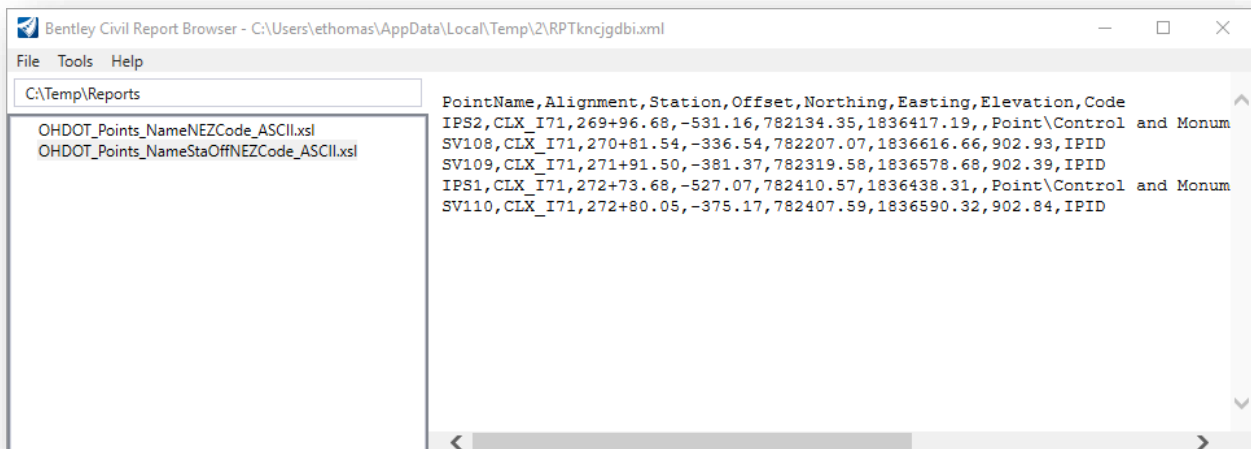
- When prompted, select the baseline geometry element that is used as the station and offset reference.
- Next, select each point element to be included in the report. Right-click when you have completed your selection

The default report is opened. Take the following steps to access the ODOT report:

- From the **Civil Report Browser** dialog, select **Tools > Style Sheet Root**

Note: In this release of the software, you cannot browse to a folder within ProjectWise. The workaround is to copy the **\Standards\Reports** folder and its content to a local folder. In the example below, the folder was copied to **C:\Temp\**

- Select the **OHDOT\_Points\_NameStaOffNEZCode\_ASCII.xsl** report as shown below.



In the example above, two Geometry Points and three Survey Points were selected.

The Code for Geometry Points will include the full path for the feature name as shown above.

The report can be saved as a CSV file as follows:

- From the *Report Browser* dialog, select **File > Save As**
  - Enter a name for the file
  - Select the **Text File (\*.txt)** option for the **Save as type** parameter
  - Browse to the location where the file will be saved.  
Note: In this release of the software you cannot browse to a ProjectWise folder location.
  - Select the **Save** icon



## Parcel Reports

The OHDOT Standards provide various custom reports for parcel areas as described below.

### Metes and Bounds Report

The metes and bounds report is used to generate a simple listing of the bearings, distances, curve data, etc. for a selected boundary element. This information is then inserted into the appropriate RX form. The various parcel forms are found on the ODOT website:

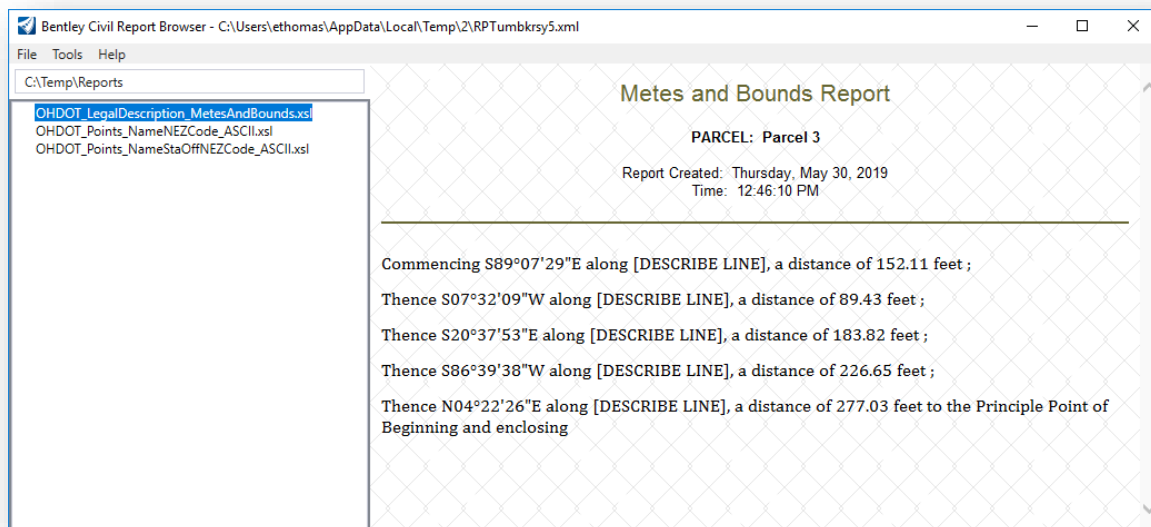
[http://www.dot.state.oh.us/Divisions/Engineering/RealEstate/row/Pages/RX\\_Forms.aspx](http://www.dot.state.oh.us/Divisions/Engineering/RealEstate/row/Pages/RX_Forms.aspx)

Take the following steps to generate a metes and bounds report:

- Use the MicroStation **Select Element** tool to select the desired geometry element
- Allow the cursor to rest over the selected element until the pop-up menu appears
- Choose the Horizontal Geometry Report icon. The default report for the selected element is displayed.
- From the *Civil Report Browser* dialog, select **Tools > Style Sheet Root**

Note: In this release of the software, you cannot browse to a folder within ProjectWise. The workaround is to copy the **\Standards\Reports** folder and its content to a local folder. In the example below, the folder was copied to **C:\Temp\**

- Select the **OHDOT\_LegalDescription\_MetesAndBounds.xml** report as shown below

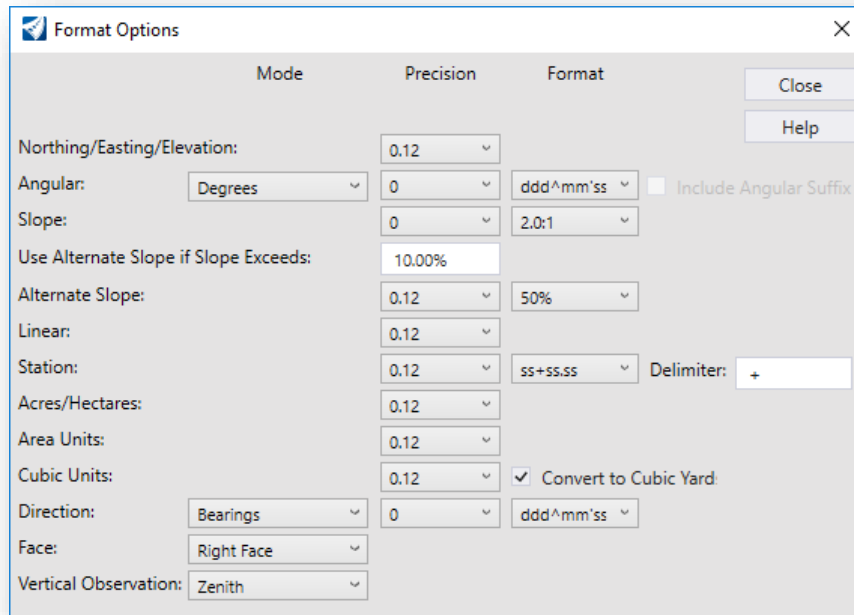


- The report can be saved by choosing the **File > Save As** option



## Report Browser Format Options

The output format for reports can be set by selecting **Tools > Format Options** from the *Report Browser* dialog.



The **Format Options** for most ODOT projects should be set like the example shown above.

Changes to these settings are dynamically applied to the current report when the dialog is closed.

These settings are stored in the registry for the user and will be maintained the next time a report is generated.



## OpenRoads Software Version

---

This document was prepared using the following software version:

OpenRoads Designer CONNECT Edition – 2019 Release 1 - Update 7 – Version 10.07.00.56

## Contacts

---

For any questions, suggestions, or problems with this document please contact the ODOT Office of CADD and Mapping Services by use of the following form on the ODOT website:

[https://odot.formstack.com/forms/cadd\\_servicerequest](https://odot.formstack.com/forms/cadd_servicerequest)

---