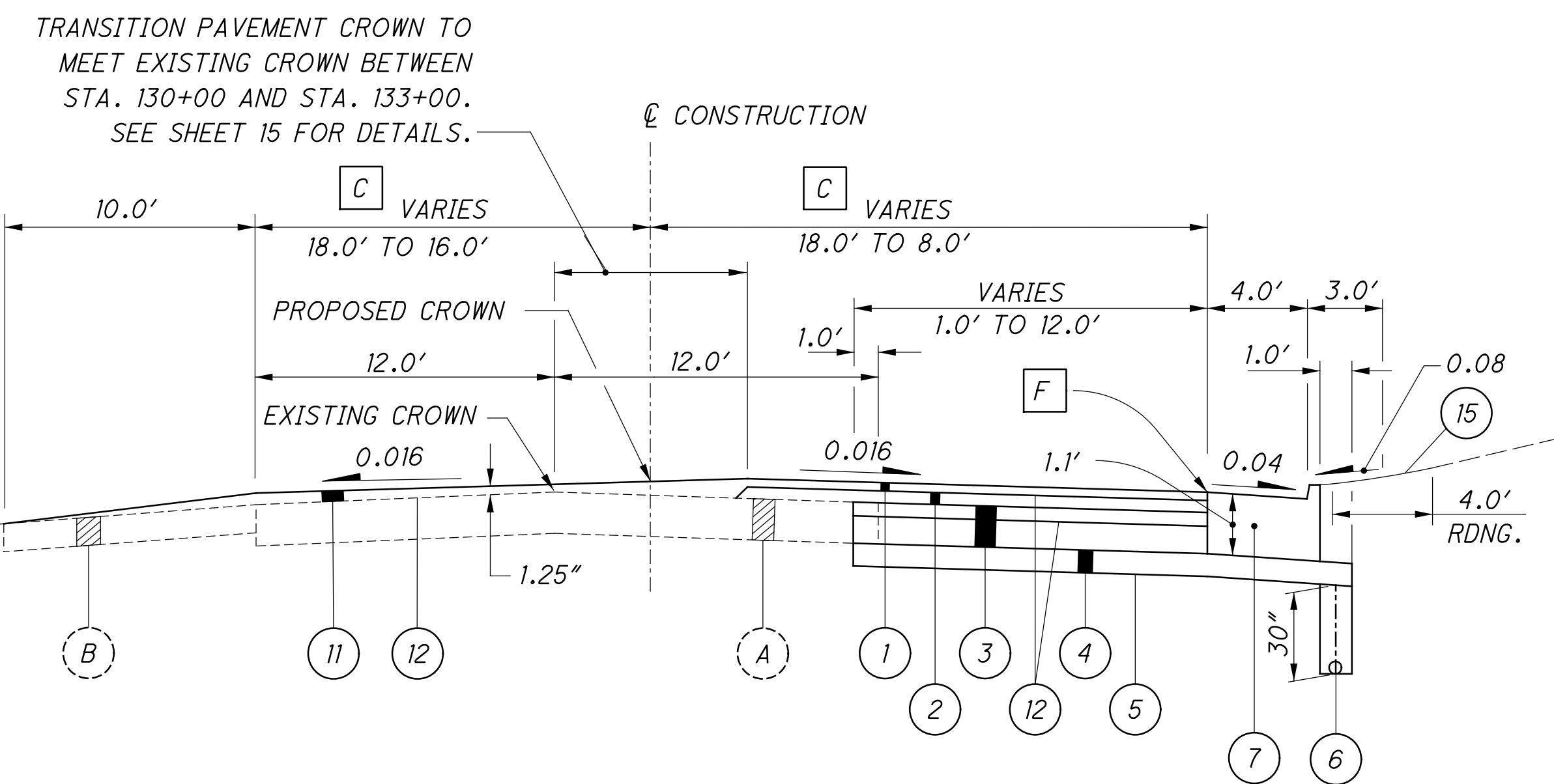


- LEGEND**
- ① ITEM 441 - 1 1/4" ASPHALT CONCRETE SURFACE COURSE, TYPE 1, (446), PG64-22
  - ② ITEM 441 - 1 3/4" ASPHALT CONCRETE INTERMEDIATE COURSE, TYPE 2, (446)
  - ③ ITEM 301 - 10" ASPHALT CONCRETE BASE, PG64-22
  - ④ ITEM 304 - 6" AGGREGATE BASE
  - ⑤ ITEM 204 - SUBGRADE COMPACTION
  - ⑥ ITEM 605 - 6" SHALLOW PIPE UNDERDRAINS [D]
  - ⑦ ITEM 609 - COMBINATION CURB AND GUTTER, TYPE 2, AS PER PLAN (SEE SHEET 9)
  - ⑧ ITEM 606 - GUARDRAIL, TYPE 5
  - ⑨ ITEM 659 - SEEDING AND MULCHING
  - ⑩ ITEM 608 - 4" CONCRETE WALK
  - ⑪ ITEM 441 - ASPHALT CONCRETE SURFACE COURSE, TYPE 1, (446), PG64-22 (VARIABLE THICKNESS)
  - ⑫ ITEM 407 - TACK COAT
  - ⑬ ITEM 408 - PRIME COAT (APPLIED AT THE RATE OF 0.4 GAL./SQ. YD.)
  - ⑭ NOT USED
  - ⑮ ITEM 660 - SODDING UNSTAKED
  - [A] 3" ± ASPHALT PAVEMENT OVER 10" ± AGGREGATE SUBBASE
  - [B] 8" ± DENSE ASPHALT



- NOTES:**
- FOR VARIABLE PAVEMENT WIDTHS AND SIDEWALK LIMITS, SEE PAVEMENT DETAILS, SHEETS 15 - 18.
  - [A] WIDTH VARIES FROM 34'-0" @ STA. 129+50 TO 22'-0" @ STA. 130+00 DUE TO RIGHT TURN LANE TAPER FROM 12' TO 0'
  - [B] WIDTH VARIES FROM 34'-0" @ STA. 124+60 TO 22'-0" @ STA. 130+00 DUE TO RIGHT THRU LANE TAPER FROM 12' TO 0'
  - [C] PAVEMENT WIDTH VARIES FROM 18'-0", LT. & RT. @ STA. 130+00 TO 16'-0" LT. AND 8'-0", RT. @ STA. 133+00 DUE TO LEFT TURN LANE TRANSITION
  - [D] EXCEPT IN AREAS OF GUARDRAIL SECTIONS, PIPE UNDERDRAINS SHALL BE LOCATED IMMEDIATELY BEHIND THE CURB.
  - [E] OR PAVEMENT SLOPE, IF GREATER
  - [F] ITEM 441, ASPHALT CONCRETE SURFACE COURSE, TYPE 1, (446), PG64-22, IS TO BE 1/4" ABOVE GUTTER PLATE.