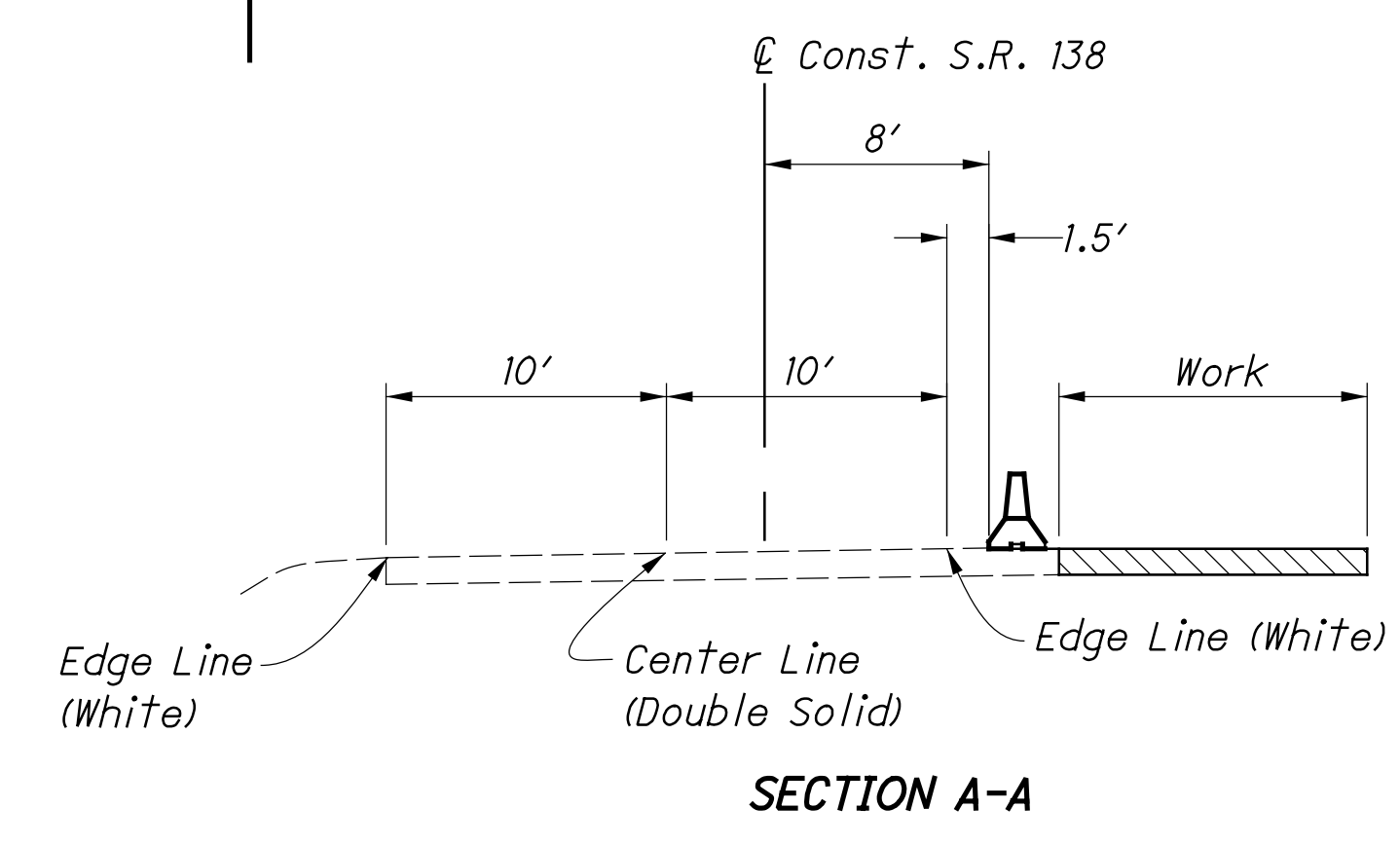
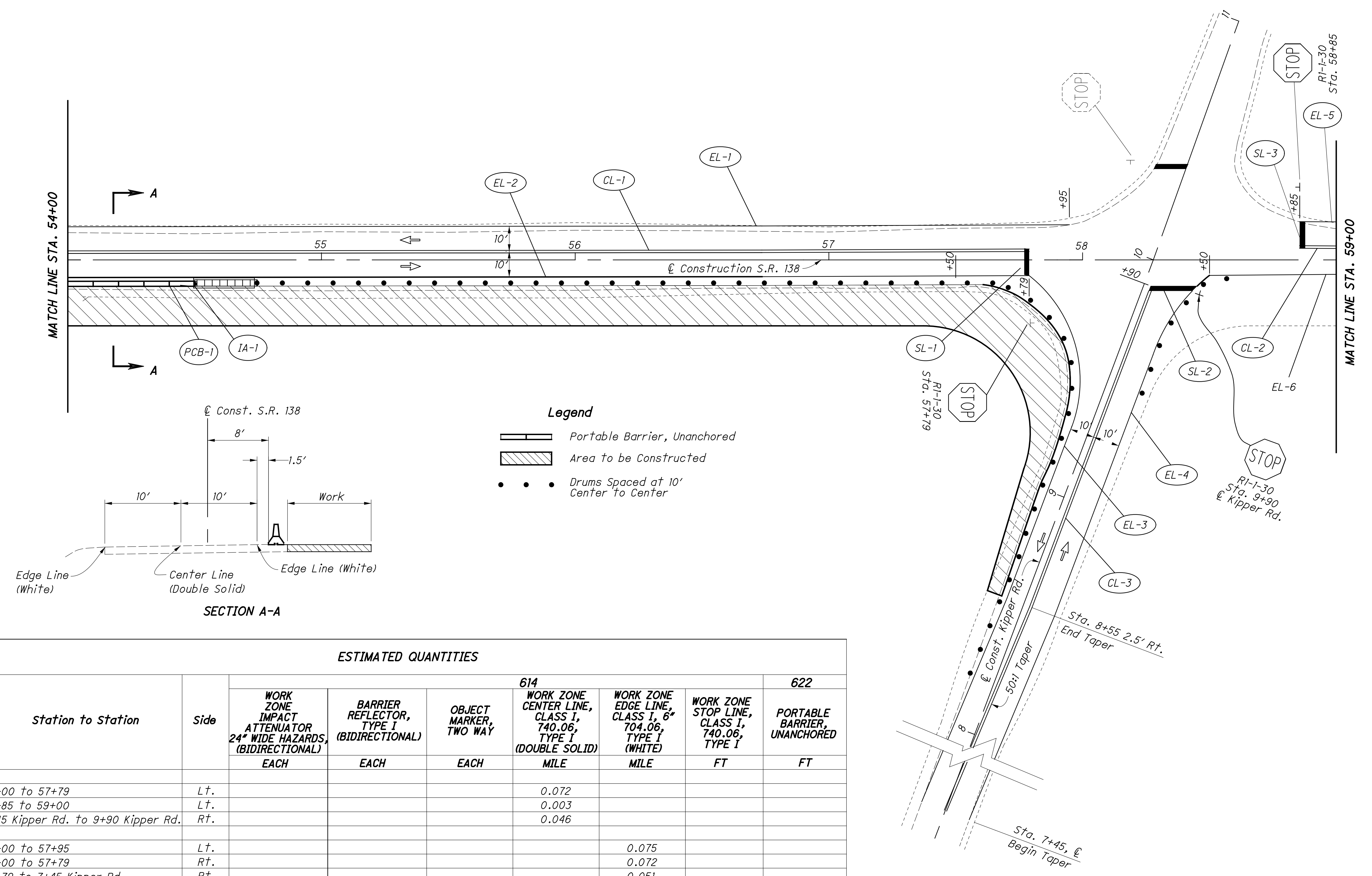


CALCULATED  
DAN  
CHECKED  
DEK

**MAINTENANCE OF TRAFFIC PHASE THREE**  
**STA. 54+00 TO STA. 59+00**

**SCI-138-11.44**



- Legend**
- Portable Barrier, Unanchored
  - Area to be Constructed
  - Drums Spaced at 10' Center to Center

**ESTIMATED QUANTITIES**

REF No.	Station to Station	Side	ESTIMATED QUANTITIES						
			WORK ZONE IMPACT ATTENUATOR 24" WIDE HAZARDS, (BIDIRECTIONAL) EACH	BARRIER REFLECTOR, TYPE I (BIDIRECTIONAL) EACH	OBJECT MARKER, TWO WAY EACH	614 WORK ZONE CENTER LINE, CLASS I, 740.06, TYPE I (DOUBLE SOLID) MILE	WORK ZONE EDGE LINE, CLASS I, 6" 704.06, TYPE I (WHITE) MILE	WORK ZONE STOP LINE, CLASS I, 740.06, TYPE I FT	622 PORTABLE BARRIER UNANCHORED FT
CL-1	54+00 to 57+79	Lt.				0.072			
CL-2	58+85 to 59+00	Lt.				0.003			
CL-3	7+45 Kipper Rd. to 9+90 Kipper Rd.	Rt.				0.046			
EL-1	54+00 to 57+95	Lt.					0.075		
EL-2	54+00 to 57+79	Rt.					0.072		
EL-3	57+79 to 7+45 Kipper Rd.	Rt.					0.051		
EL-4	7+45 Kipper Rd. to 58+50	Rt.					0.049		
EL-5	58+85 to 59+00	Lt.					0.003		
EL-6	58+50 to 59+00	Rt.					0.009		
SL-1	57+79	Rt.						15	
SL-2	9+90 Kipper Rd.	Rt.						18	
SL-3	58+85	Rt.						10	50
PCB-1	54+00 to 54+50	Rt.		2	2				
IA-1	54+50 to 54+75	Rt.	1						
<b>TOTALS CARRIED TO SUBSUMMARY</b>			<b>1</b>	<b>2</b>	<b>2</b>	<b>0.05</b>	<b>0.10</b>	<b>43</b>	<b>50</b>

